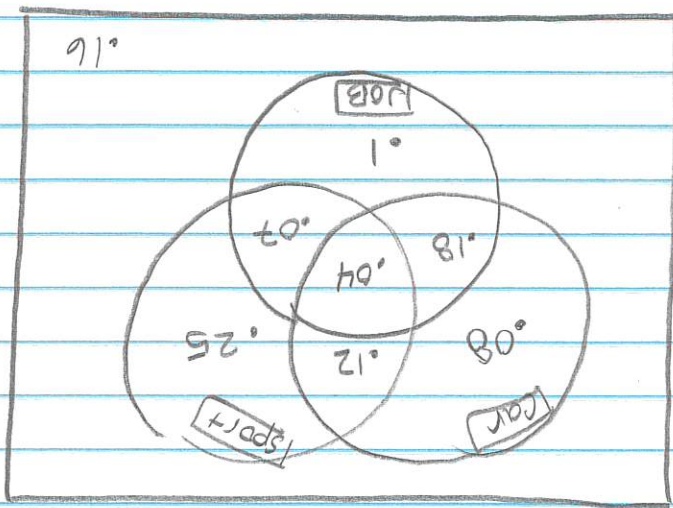


⑥ $P(\text{No job, No car, No sport}) = .16 = \boxed{16\%}$

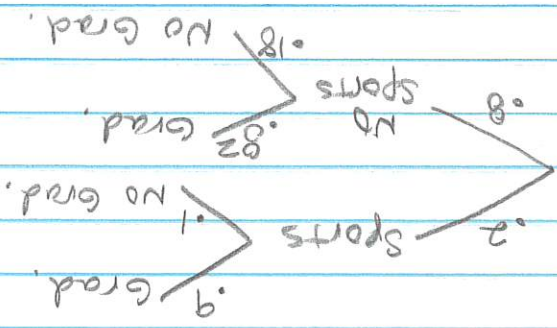
⑦ $P(\text{Only sport}) = .25 = \boxed{25\%}$



8.

⑧ $P(\text{No sports} | \text{grad}) = \frac{(.8)(.82) + (.2)(.9)}{(.8)(.82)} = \frac{.656}{.656} = \boxed{.7847}$

⑨ $P(\text{grad} | \text{sports}) = \frac{P(\text{grad} \cap \text{sports})}{P(\text{sports})} = \frac{.2}{.18} = \boxed{.9}$



⑩